
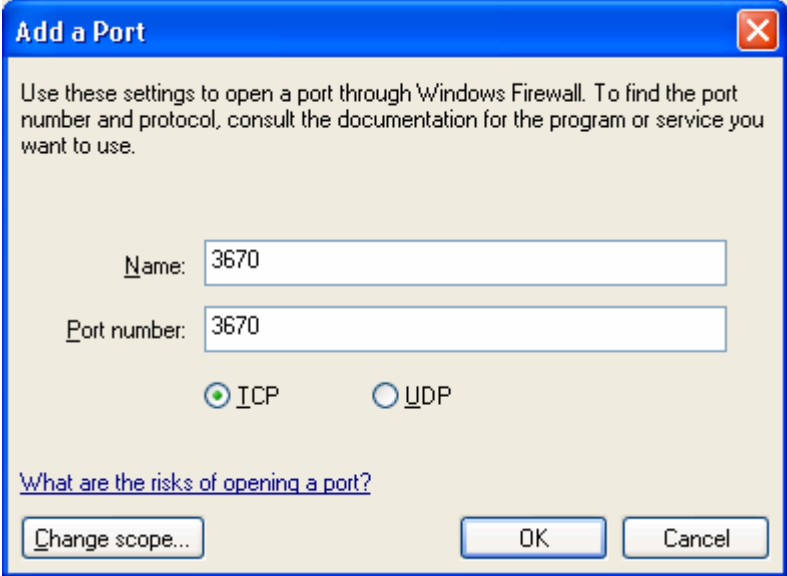
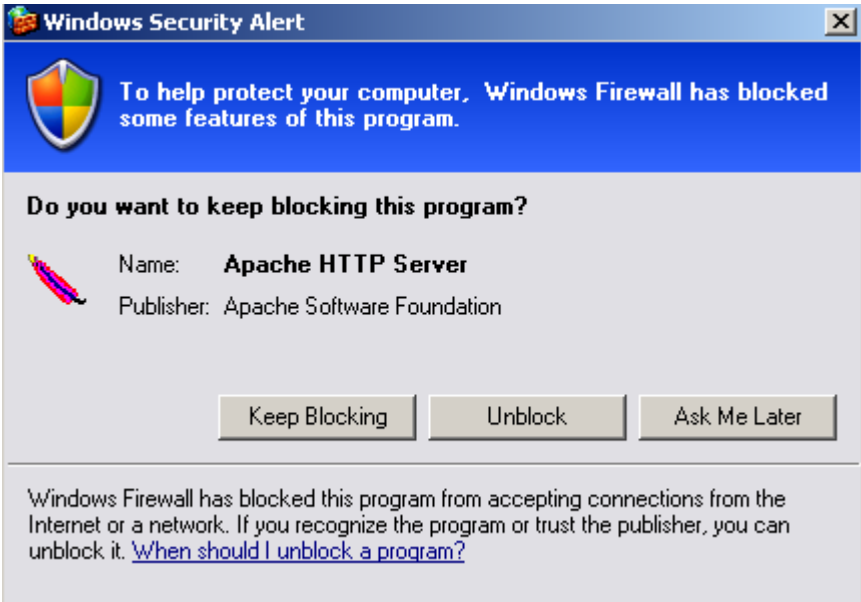
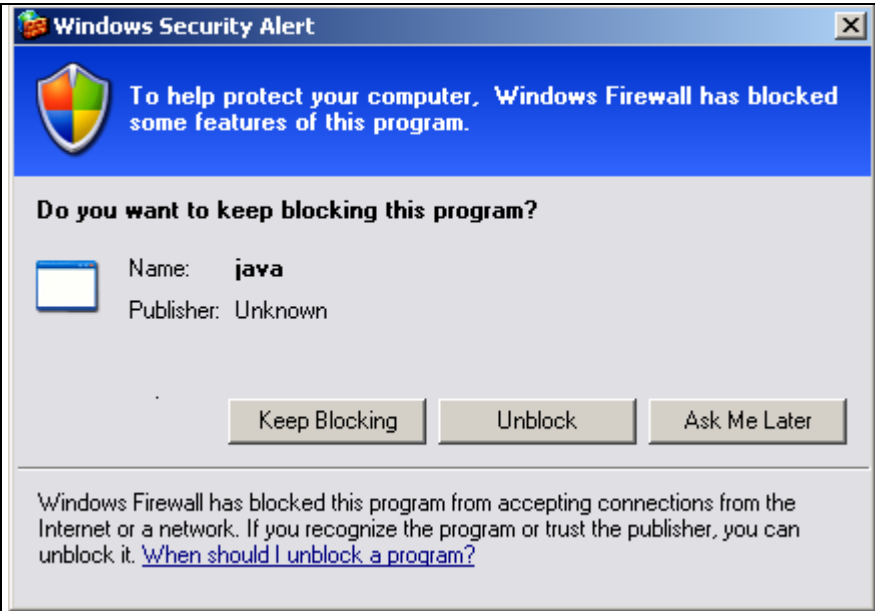



Products/Functions	Failure Symptom	Workaround	Remarks
Document Solution Products			
DeskTopBinder V2Professional/Lite	A	X(Y)	<p>* Windows Security Alert will be displayed when using TWAIN driver for scanning.</p> 
Scan Router Document Server	T.B.A.	X(Y)/Z	
Scan Router V2Professional/Lite	B	X(Y)/Z	<p>The FTP protocol is used in 2 situations when using ScanRouter: 1) When scanned data is transferred from the MFP to the ScanRouter server. 2) When the destination list is uploaded from the ScanRouter server to the MFP. The ftp port, "3670", have to be added by manual for these function as follows:</p>

			
Web SmartDeviceMonitor	B	X(Y)/Z	<p>WSA will be displayed twice when Web SDM is installed.</p> 



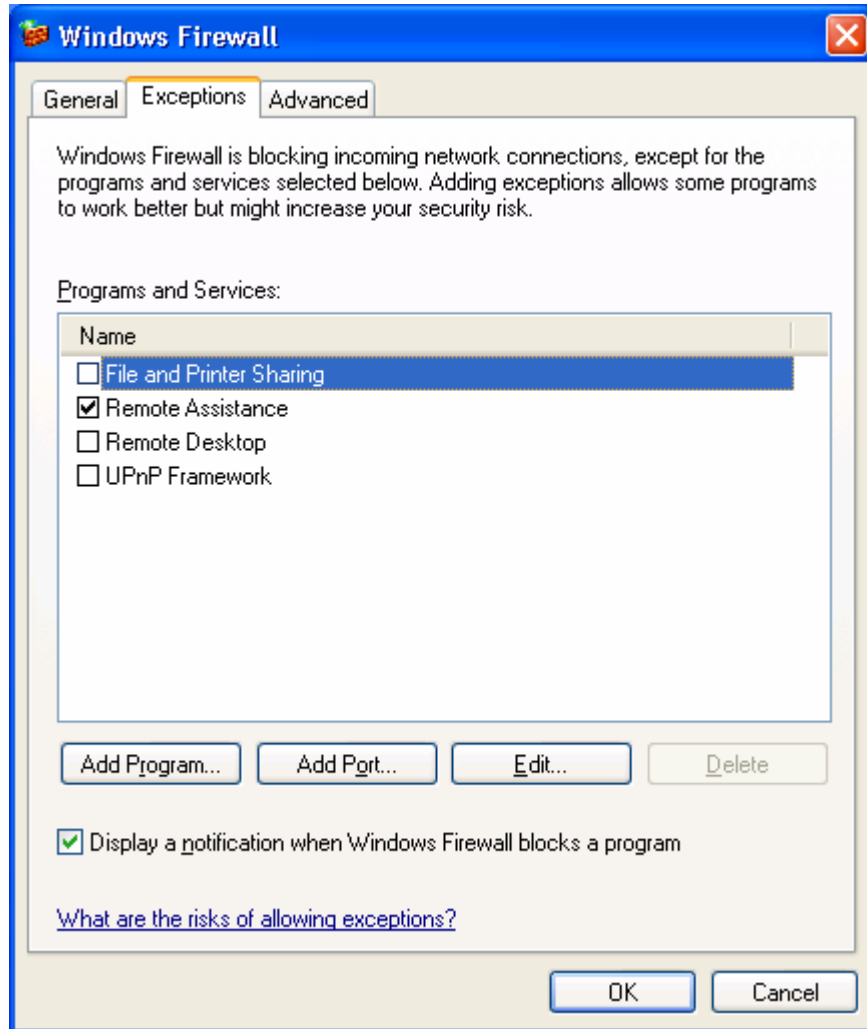
Palm2	T.B.A.	X(Y)		
Globalscan	T.B.A.			
Documentmall	T.B.A.			
eCabinet	T.B.A.			
Printer Drivers/Utilities				
SmartDeviceMonitor for Admin/Client	B	X(Y)		* Windows Security Alert will be displayed when seeing "Job History".



				
TWAIN Drivers	A	X(Y)		Please refer to the remarks of "DeskTopBinder V2Professional/Lt" *The same issue occurs using the TWAIN Driver with other applications. In this case the same workaround is effective.
Printing with Printer Drivers	No problems	-		
Point and Print printing (Shared printer)	B	-		Please refer to Note*1
LAN FAX Driver	No problems	-		
LAN FAX Driver (Shared)	B	-		Please refer to Note*1
EFI Utilities	T.B.A.	X(Y)		
Ratio Utilities	T.B.A.	X(Y)		
Scanner Functions				
Scan to Folder	B	-		Please refer to Note*1
Scan to FTP	A	Z		The FTP port have to open by manual. Please refer to the bitmap "Z" in workaround.

Note*1: File and Printer Sharing program is unavailable by default when installing the Windows XP SP2.

File and Printer Sharing

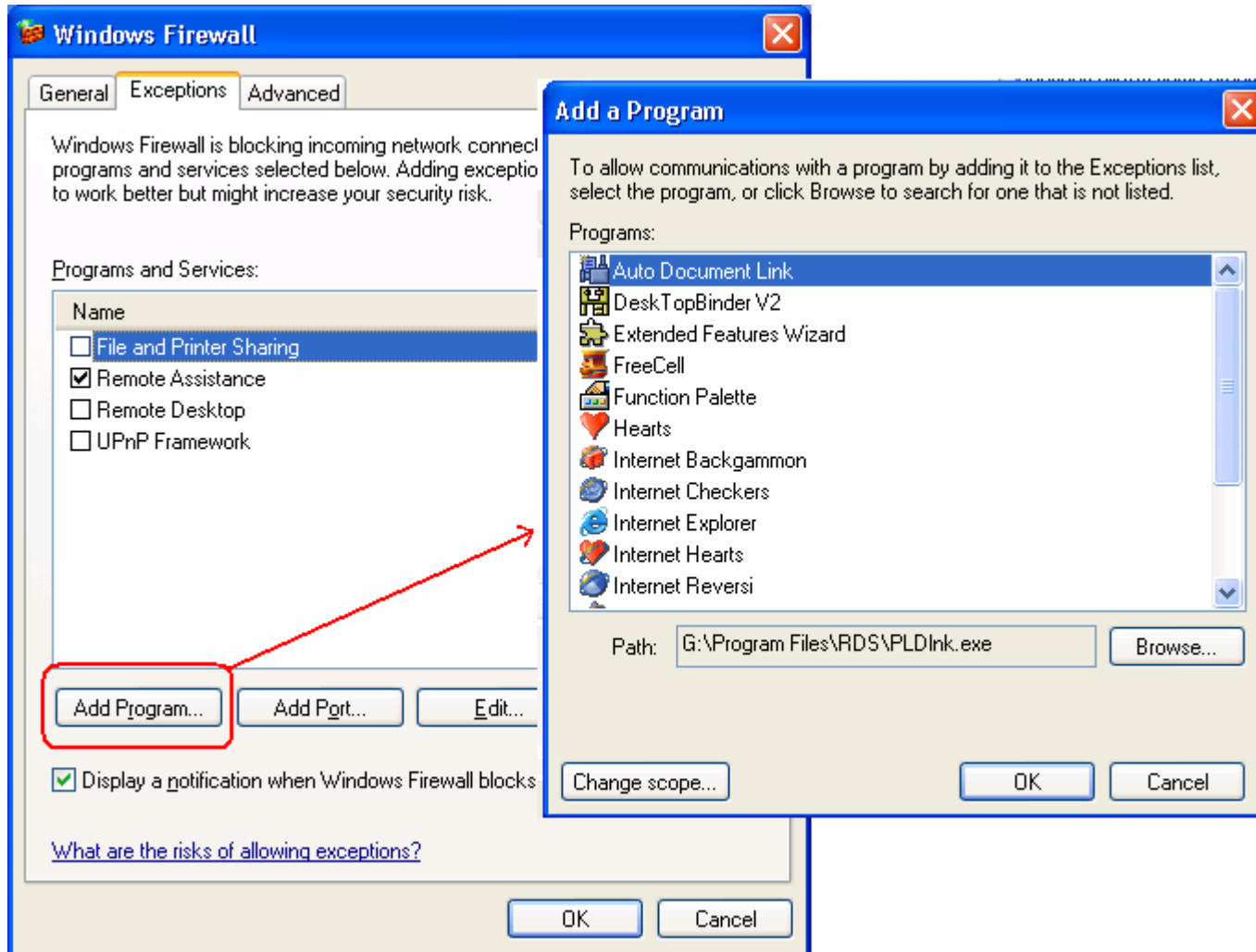


Workarounds

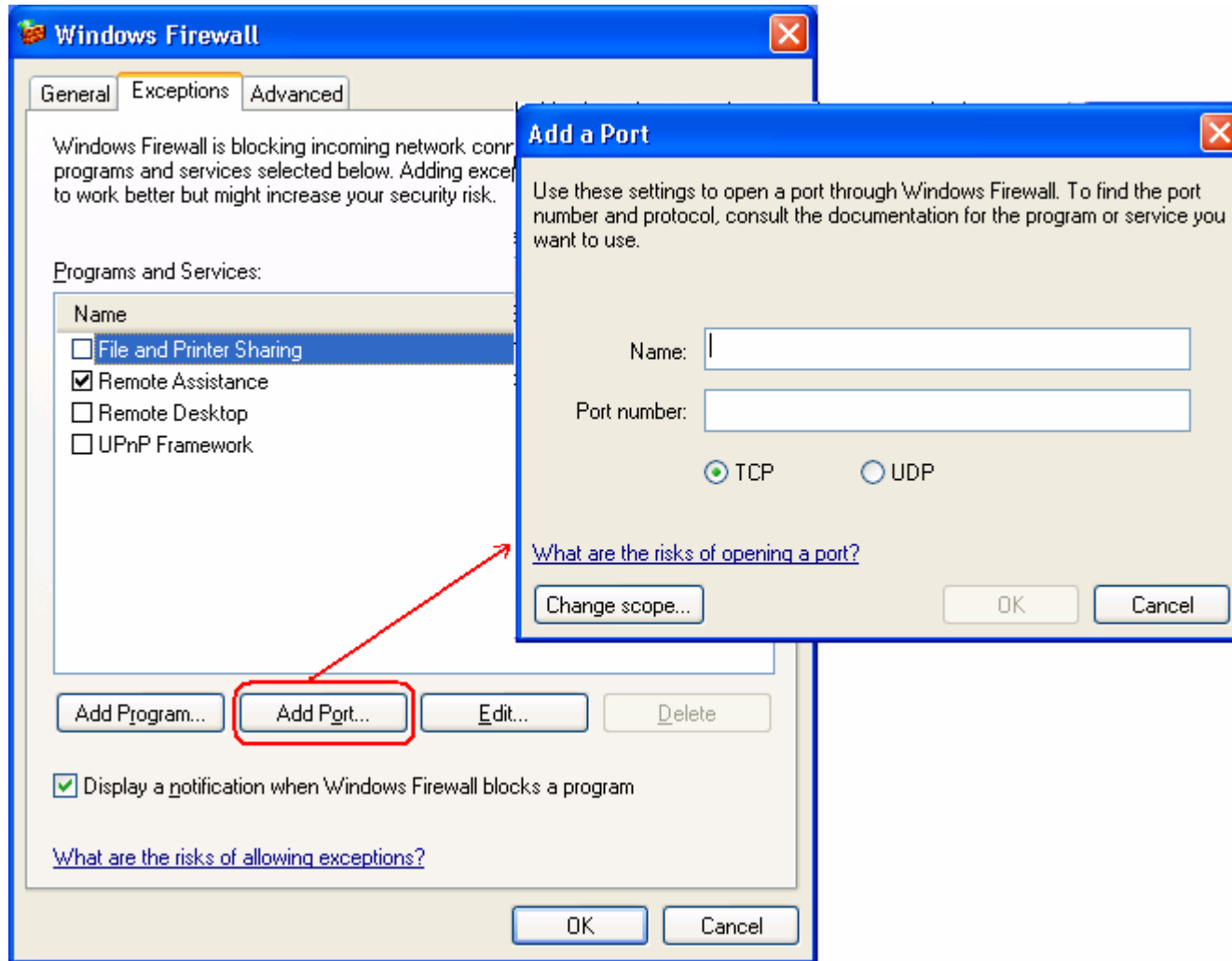
X: Configuring Windows Firewall by using the Windows Firewall Security Alert



Y: Adding a program exception



Z: Adding a port exception



Notes

1. Failures in network programs are not limited to firewall issues. These failures may be caused by RPC or DCOM security changes. Therefore, you have to determine whether the failure is accompanied by a Windows Firewall Security Alert that indicates that a program is being blocked.
2. Service failures are not accompanied by a Windows Firewall Security Alert because services are not typically associated with a user logon session. If the failure is service-related, configure the firewall as discussed in the "Configuring Windows Firewall by using the Windows Security Center" section.

